

S^T JAMES PARK

DIDSBURY



TUDOR LODGE

THREE BEDROOM CONVERTED LODGE

Beautifully converted and unique historic lodge with contemporary design offering family accommodation arranged over two floors.

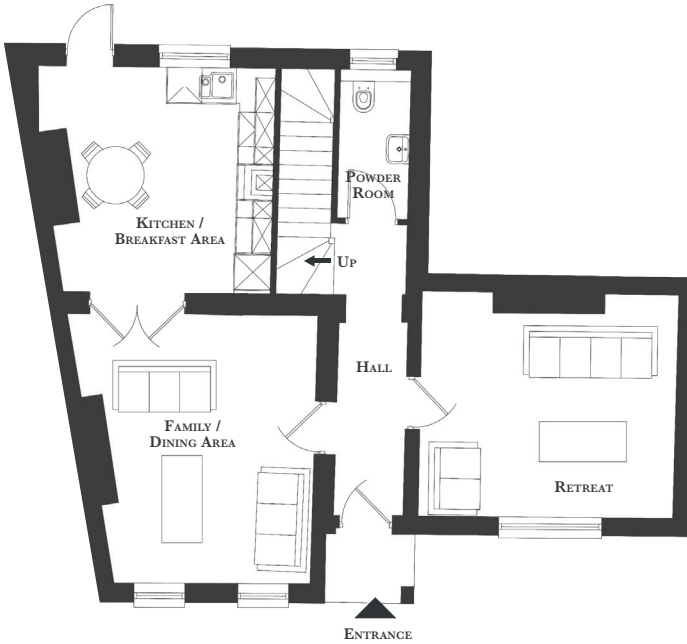
This heritage building consists of a spacious living / dining room, retreat and separate bespoke kitchen / breakfast room with integrated appliances.

There is an additional downstairs powder room and access out onto the private garden area.

The generous master bedroom is located on the first floor and comes complete with a luxury en-suite whilst the second and third double bedrooms are complimented by the bespoke family bathroom.

PROVISIONAL

PROVISIONAL



GROUND FLOOR

Family / Dining	4310 x 4615	(14' 2" x 15' 2")
Kitchen / Breakfast	3870 x 4080	(12' 8" x 13' 5")
Retreat	4375 x 3835	(14' 4" x 12' 7")
Powder Room	2525 x 1175	(8' 3" x 3' 10")

FIRST FLOOR

Master Bedroom	3920 x 4095	(12' 10" x 13' 5")
Master En-suite	1550 x 2950	(5' 1" x 9' 8")
Bedroom Two	3345 x 3610	(11' 0" x 11' 10")
Bedroom Three	3710 x 3820	(12' 2" x 12' 6")
Bathroom	3405 x 1940	(11' 2" x 6' 4")