

ST JAMES PARK

SOUTHSEA



THE EXBURY | PLOT 05

**Unique two bedroom end mews home with garden,
dedicated parking and EV charging**

Dual aspect living/dining room with access through French doors onto the private garden. Separate spacious kitchen/breakfast room featuring a German manufactured high specification kitchen complete with integrated appliances.

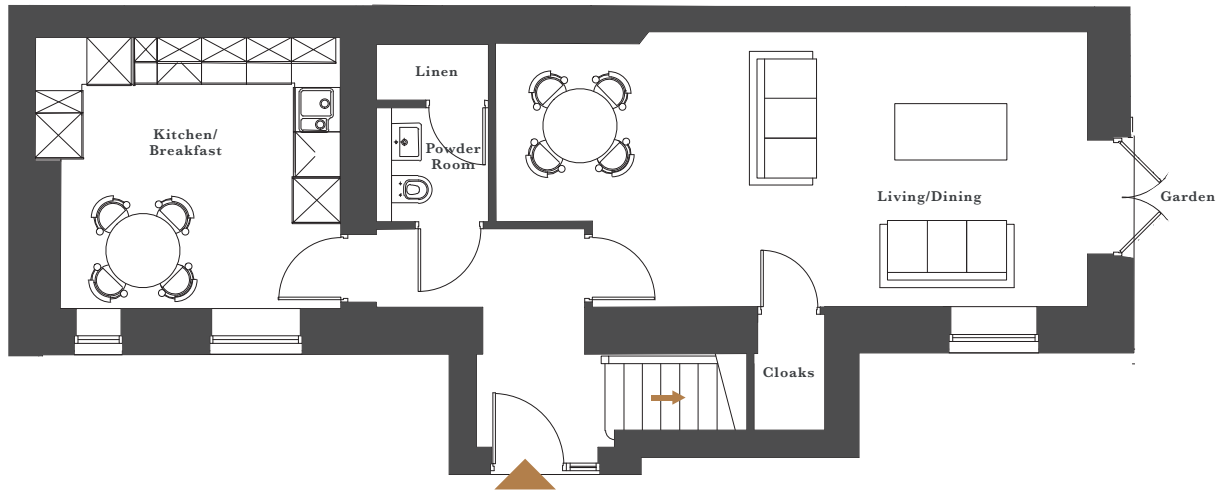
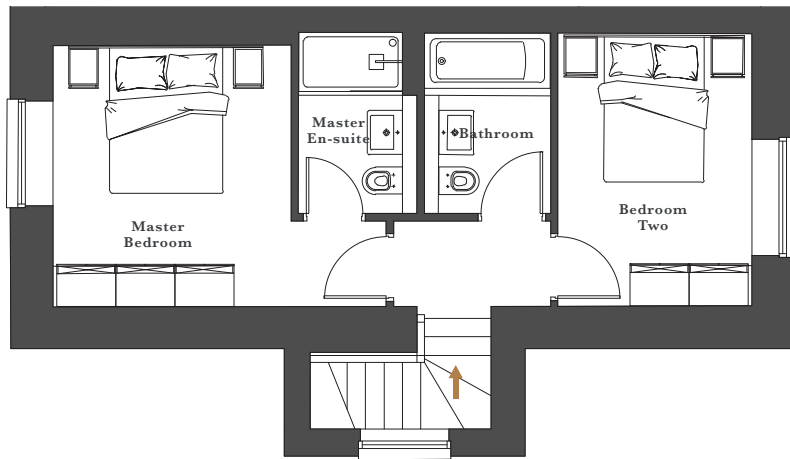
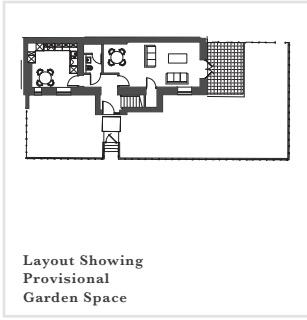
The first floor hosts the master bedroom complete with en-suite whilst the second double bedroom is complimented by luxury family.

This property also offers a downstairs powder room, utility room, ample storage space, dedicated parking for two vehicles and EV charging.

PROVISIONAL

PLOT 05

PROVISIONAL



GROUND FLOOR

Living/Dining	7890 x 3635	(25' 11" x 11' 11")
Kitchen/Breakfast	4050 x 3590	(13' 3" x 11' 9")
Powder Room	1480 x 1450	(4' 10" x 4' 9")

FIRST FLOOR

Master Bedroom	3490 x 3185	(11' 5" x 10' 5")
Master En-suite	2400 x 1555	(7' 10" x 5' 1")
Bedroom Two	3945 x 2565	(12' 11" x 8' 5")
Bathroom	2410 x 1655	(7' 11" x 5' 5")